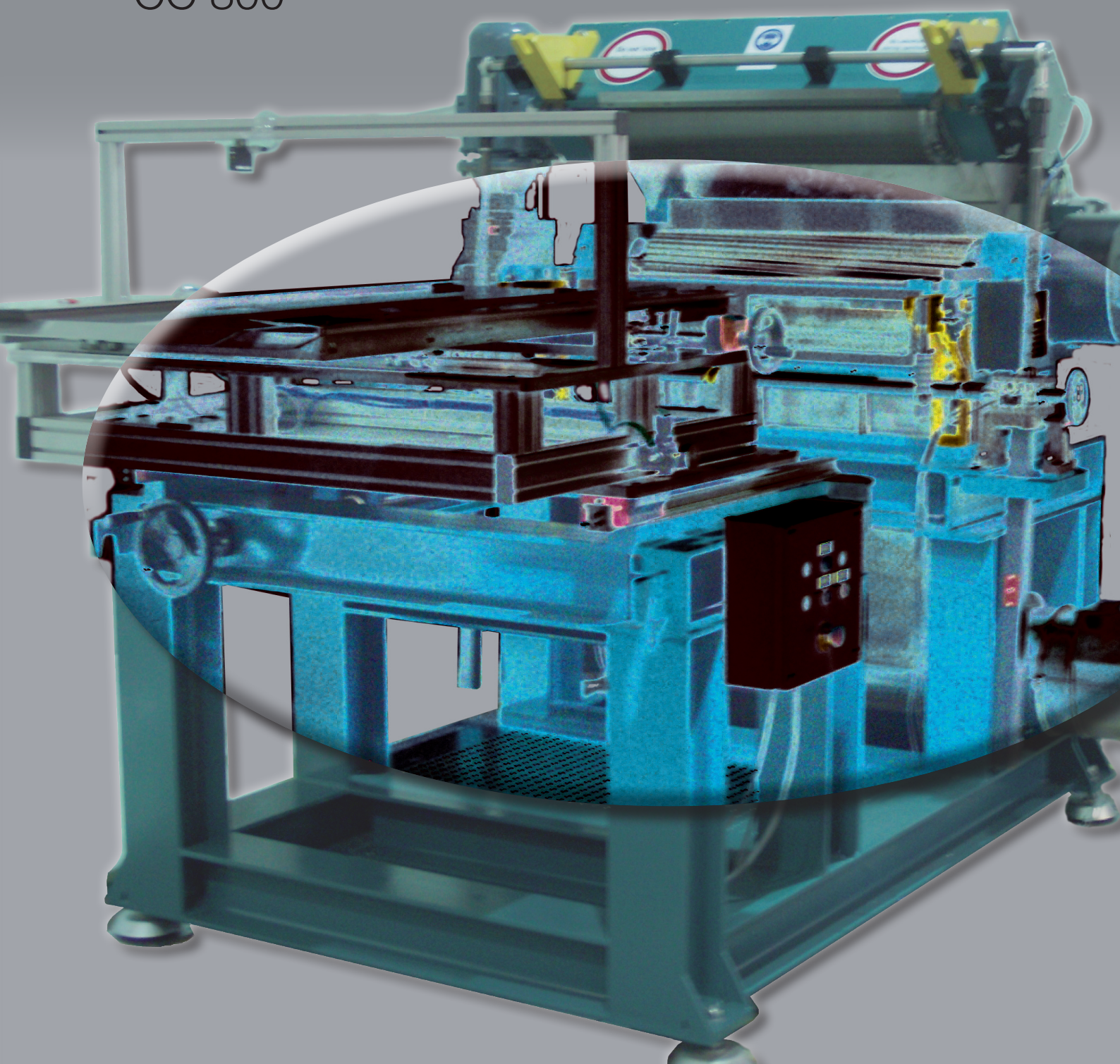


bowasag

**WOOD CELLULOSE
or LINTERS CELLULOSE
CUTTER**

CC 800





WOOD CELLULOSE or LINTERS CELLULOSE CUTTER CC 800

Main Operation

■ The *wood cellulose or linters cellulose cutter* is used for cutting of wood pulp rolled material into slivers, as needed for the production of *nitrocellulose*.

Available Capacities

■ The *wood cellulose or linters cellulose cutter* has a cutting capacity of 500 up to 1000 kg/h, adjustable.

Function and advantages

BOWAS is in a position to offer a modern, state of the art plant concept which fits into the concept of existing *client's* plant sections actually under modernization and as stand alone solutions. The plant concept aims at offering the most economical solution which follows *client's* requirements.

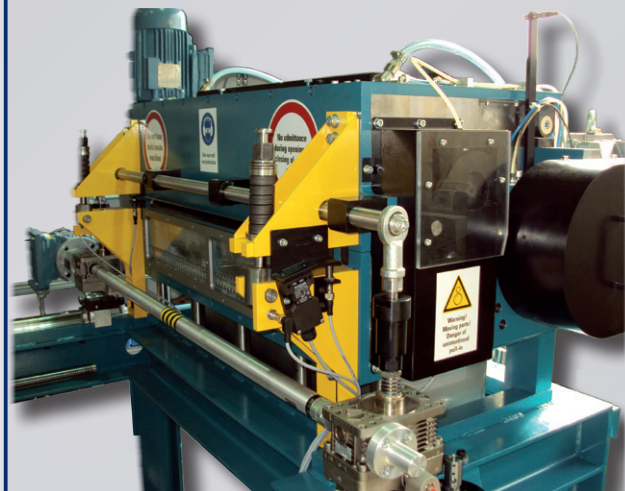
The *wood cellulose or linters cellulose cutter* is a part of an optionally machine group.

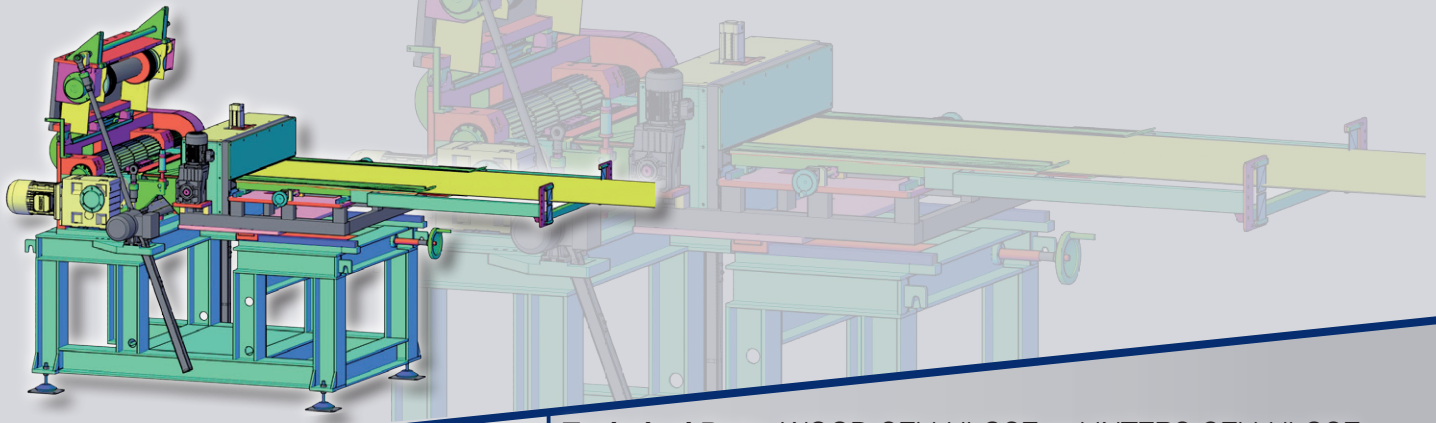
This machine group is consisting of:

- Feeding system for roll material
- Derolling system
- Cutting machine
- Dosing unit with bridge preventer in preparation for pneumatic transport system (by the client)

For the production of slivers the wood cellulose rolls or linters cellulose rolls are provided in the derolling system.

This derolling device is responsible for the derolling of the wood cellulose or linters cellulose and has to make sure that the roll material is properly aligned to be fed into the cutter.

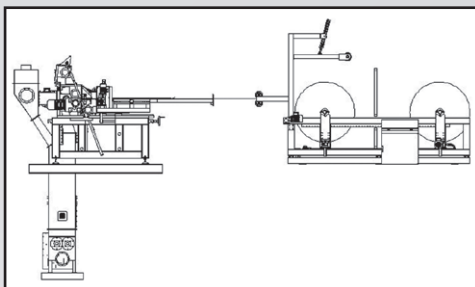




The inserted roll material is manually fed into the longitudinal cutter, which cuts the material into stripes. By automatic transport to the cross cutter the stripes are cut into slivers. The cutting width of the slivers can be adjusted by changing the ratio between longitudinal speed and cross cutting speed. This can be easily executed by a software control. To a certain extent the width of the slivers can be adjusted by changing the feeding velocity.

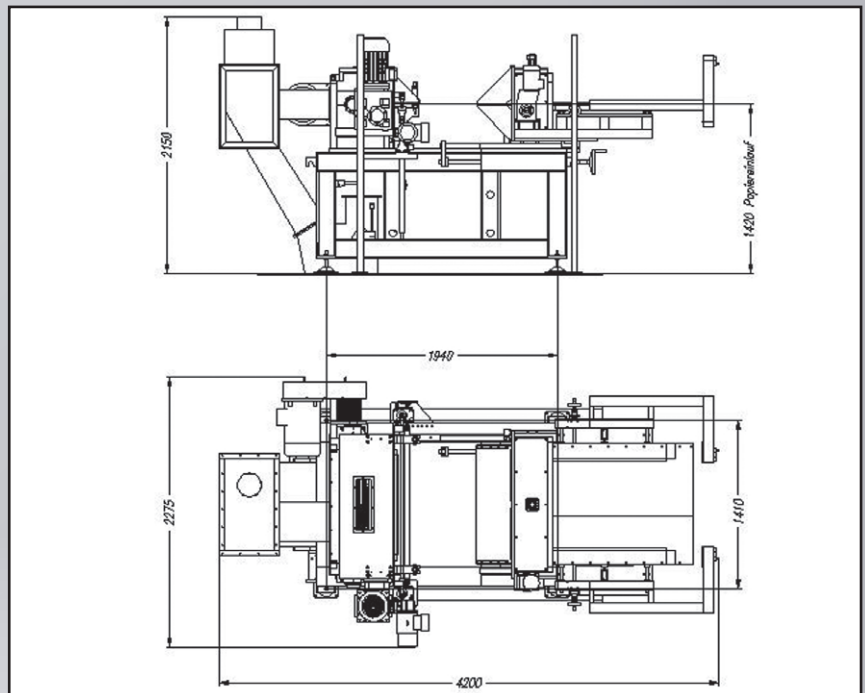
The slivers discharged from the cross cutter fall into a funnel with a bridge preventer device and are conveyed via a pneumatic transport system which is not part of the delivery.

The equipment is designed for a high availability at low maintenance costs. The *wood cellulose or linters cellulose cutter* is a proven and highly productive machine which satisfies all needs for the production of nitrocellulose.




Technical Data WOOD CELLULOSE or LINTERS CELLULOSE CUTTER CC 800

Cutting capacity:	500 - 1000 kg/h
Execution:	Heavy duty type
Slivers length	6,0 mm (part of the machine design) Other dimensions on request
Slivers width	1,0 - 3,0 mm (adjustable) Other dimensions on request
Sheet thickness	0,8 to 1,4 mm
Sheet weight	500 - 700 g/m ²
Roll width	750 mm to 840 mm
Supply voltage	400 V – 50/60 Hz - 3 phases
Motor power	approx. 35 kW
Instrument air	approx. 250 Nm ³ /h, abs. 6 bar
Transport air	min. 4000 Nm ³ /h as guideline for material dispatch
Global supply	CE Conformity Declaration
Colouring	RAL 5021 or depending on Client's requirements
Protection	Dust EX proof design available as an option
Length	4200 mm
Width	2275 mm
Height	2150 mm
Weight	4000 kg





Bowas AG für Industrieplanung
Industriestrasse 13b · CH-6300 Zug

 +41417112722

Fax +41417110817

e-mail: office@bowas.ch